



GEARHEADS(POWERFUL TYPE) Frame size 90mm sq. (3.54 in. sq.)

BALL BEARING TYPE

RATED TORQUE OF GEARHEAD

MODEL	Speed(rpm)	500	300	200	120	100	60	50	30	20	15	10	9	6	5	3	2	1	
	Ratio	50Hz	3	5	7.5	12.5	15	25	30	50	75	100	150	166.7	250	300	500	750	1500
		60Hz	3.6	6	9	15	18	30	36	60	90	120	180	200	300	360	600	900	1800
L9VK□B	kg-cm	10.9	18.2	27.3	41.1	49.3	74.3	89.1	148.5	199.1	200	200	200	200	200	200	200	200	
L9WK□B	N-m	1.07	1.79	2.68	4.02	4.83	7.28	8.73	14.55	19.51	19.60	19.60	19.60	19.60	19.60	19.60	19.60	19.60	
L9V10D(DECIMAL)	oz-in	152	253	380	570	684	1031	1237	2062	2765	2777	2777	2777	2777	2777	2777	2777	2777	

With Decimal Gearhead

- * The normal torque is that the motor and gearhead are directly coupled.
- * Insert the denominator of reduction ratio in □ of gearhead model name.
- * Actual rotation speed is 2~15% less than synchronous speed.
- * ■Color indicates that the rotation of gearhead shaft is in opposite direction as output shaft of motor.

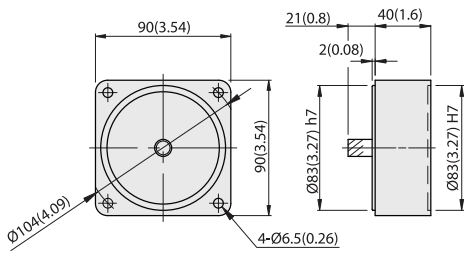
TERMINAL BOX TYPE
REVERSIBLE MOTORS

DIMENSIONS

Unit : mm(inch)

DECIMAL GEARHEAD

L9V10D

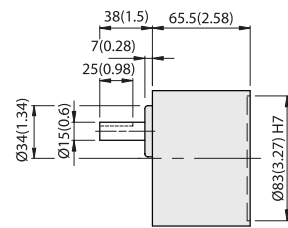


WEIGHT 0.6kg (1.3 lb)

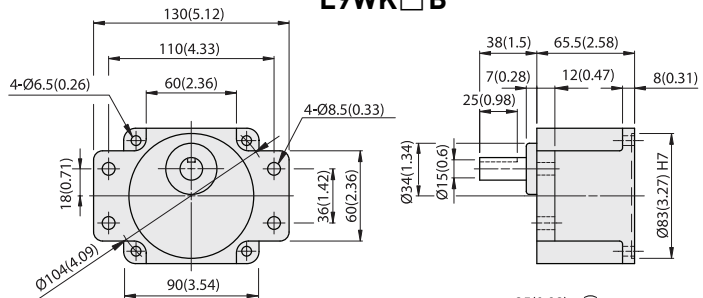


GEARHEAD

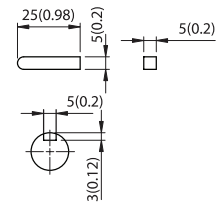
L9VK□B



L9WK□B



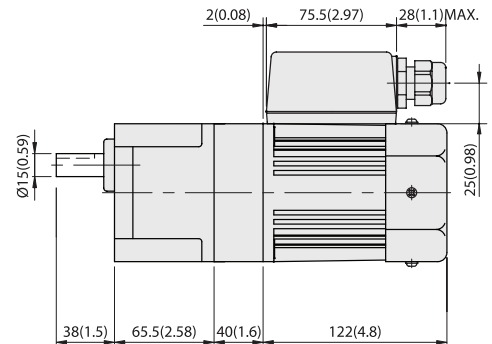
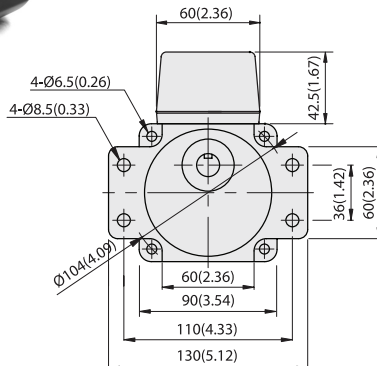
MODEL	GEAR RATIO	WEIGHT		BOLT
		kg	lb	
L9VK□B	1/3~1/200	1.5	3.3	M6x95
L9WK□B	1/3~1/200	1.6	3.5	M6xL25



KEY SIZE



L9WK□B + L9V10D + L9R60P□HTB





GEARHEADS(ULTRA POWERFUL TYPE) Frame size 90mm sq. (3.54 in. sq.)

BALL BEARING TYPE

RATED TORQUE OF GEARHEAD

MODEL	Speed(rpm)	500	300	200	120	100	60	50	30	20	15	10	9	6	5	3	2	1
	Ratio	50Hz	3	5	7.5	12.5	15	25	30	50	75	100	150	166.7	250	300	500	750
	60Hz	3.6	6	9	15	18	30	36	60	90	120	180	200	300	360	600	900	1800
L9UK□B L9V10D(DECIMAL)	kg-cm	10.9	18.2	27.3	41.1	49.3	74.3	89.1	148.5	199.1	265.5	300	300	300	300	300	300	300
	N-m	1.07	1.79	2.68	4.02	4.83	7.28	8.73	14.55	19.51	26.02	29.4	29.4	29.40	29.40	29.40	29.40	29.40
	oz-in	152	253	380	570	684	1031	1237	2062	2765	3687	4166	4166	4166	4166	4166	4166	4166

With Decimal Gearhead

- * The normal torque is that the motor and gearhead are directly coupled.
- * Insert the denominator of reduction ratio in □ of gearhead model name.
- * Actual rotation speed is 2~15% less than synchronous speed.
- * ■Color indicates that the rotation of gearhead shaft is in opposite direction as output shaft of motor.

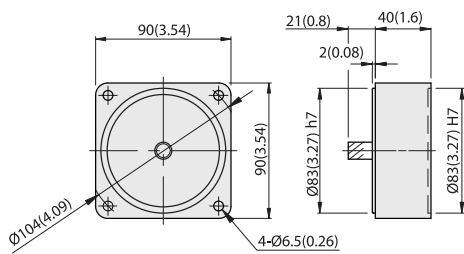
TERMINAL BOX TYPE REVERSIBLE MOTORS

DIMENSIONS

Unit : mm(inch)

DECIMAL GEARHEAD

L9V10D

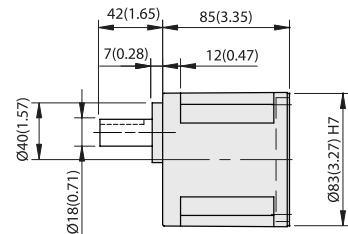
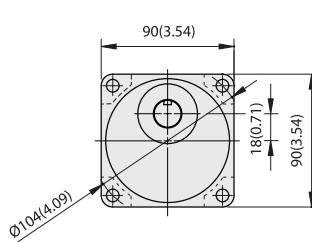


WEIGHT 0.6kg (1.3 lb)

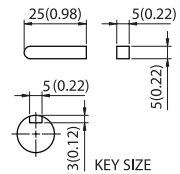


GEARHEAD

L9UK□B



MODEL	GEAR RATIO	WEIGHT		BOLT
		kg	lb	
L9UK□B	1/3~1/200	1.95	4.3	M6xL20



L9UK□B + L9160P□HTB

